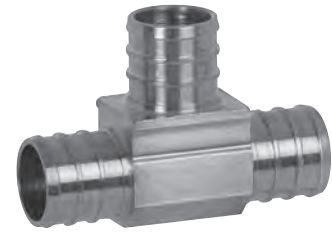


**PowerPEX™****Brass Tee**

- One-piece standard brass



641XB333

Item No	Description (Branch × Branch × Tee)	Pkg	Min Qty	Case Qty
641XB111	3/8" F1807 × 3/8" F1807 × 3/8" F1807	B	50	500
641XB111PK2	3/8" F1807 × 3/8" F1807 × 3/8" F1807, 1/bag	C*	20	20
641XB222	1/2" F1807 × 1/2" F1807 × 1/2" F1807	B	50	500
641XB222PK2	1/2" F1807 × 1/2" F1807 × 1/2" F1807, 1/bag	C*	20	20
641XB223	1/2" F1807 × 1/2" F1807 × 3/4" F1807	B	20	200
641XB223PK2	1/2" F1807 × 1/2" F1807 × 3/4" F1807, 1/bag	C*	20	20
641XB322	3/4" F1807 × 1/2" F1807 × 1/2" F1807	B	20	200
641XB322PK2	3/4" F1807 × 1/2" F1807 × 1/2" F1807, 1/bag	C*	20	20
641XB323	3/4" F1807 × 1/2" F1807 × 3/4" F1807	B	20	200
641XB323PK2	3/4" F1807 × 1/2" F1807 × 3/4" F1807, 1/bag	C*	20	20
641XB332	3/4" F1807 × 3/4" F1807 × 1/2" F1807	B	20	200
641XB332PK2	3/4" F1807 × 3/4" F1807 × 1/2" F1807, 1/bag	C*	20	20
641XB333	3/4" F1807 × 3/4" F1807 × 3/4" F1807	B	20	200
641XB333PK2	3/4" F1807 × 3/4" F1807 × 3/4" F1807, 1/bag	C*	20	20
641XB334	3/4" F1807 × 3/4" F1807 × 1" F1807	B	20	200
641XB432	1" F1807 × 3/4" F1807 × 1/2" F1807	B	20	200
641XB433	1" F1807 × 3/4" F1807 × 3/4" F1807	B	20	200
641XB434	1" F1807 × 3/4" F1807 × 1" F1807	B	20	200
641XB442	1" F1807 × 1" F1807 × 1/2" F1807	B	20	200
641XB443	1" F1807 × 1" F1807 × 3/4" F1807	B	20	200
641XB443PK2	1" F1807 × 1" F1807 × 3/4" F1807, 1/bag	C*	20	20
641XB444	1" F1807 × 1" F1807 × 1" F1807	B	20	100



SUPPLY

DRAINAGE

SUPPORT

APPENDIX

**PowerPEX™****Copper Coupling**

- Tube stops formed into each fitting
- One-piece solid copper



645X1

Item No	Description	Pkg	Min Qty	Case Qty
645X1	3/8" F1807 × 3/8" F1807	B	100	1000
645X1PK2	3/8" F1807 × 3/8" F1807, 2/bag	C*	20	20
645X2	1/2" F1807 × 1/2" F1807	B	100	1000
645X2PK2	1/2" F1807 × 1/2" F1807, 2/bag	C*	20	20
645X2PK3	1/2" F1807 × 1/2" F1807, 100/bag	C*	10	10
645X32	1/2" F1807 × 3/4" F1807	B	50	500
645X32PK2	1/2" F1807 × 3/4" F1807, 2/bag	C*	20	20
645X3	3/4" F1807 × 3/4" F1807	B	50	500
645X3PK2	3/4" F1807 × 3/4" F1807, 2/bag	C*	10	10
645X43	3/4" F1807 × 1" F1807	B	25	250
645X43PK2	3/4" F1807 × 1" F1807, 2/bag	C*	10	10
645X4	1" F1807 × 1" F1807	B	25	250
645X4PK2	1" F1807 × 1" F1807, 2/bag	C*	10	10



NEW